

MULTITOP PRO

Designed to resist.

Corrects heat distortion of the door: reduced maintenance, greater energy savings.

CISA technology against forced entry.



C CORRECTS HEAT DISTORTION

The “effort reducing” gear mechanism makes it easier to turn the key, and the 12 mm thick deadbolt with its more rounded design, offer an effective solution to close and secure doors subject to heat distortion.

C HIGH SECURITY

- The new locking system with its hook (CISA patent registered) and the deadbolt with its increased thickness (12 mm) guarantee increased resistance to forced entry.
- Offers greater resistance to forced entry as the deadbolts are independent of the central mechanism.

C ELECTRIC VERSION

The CISA Multitop Pro series offers a complete range of electric locks with a 15.5 mm thick case. With fewer holes needed on the profile, so the lock can be correctly installed on thermal cut and European groove profiles.

C INTERCHANGEABILITY

The new CISA Multitop Pro is completely interchangeable with previously installed versions with no additional work needed on the door.

C CERTIFICATION

CISA Multitop Pro is certified:

- **Short faceplate version according to the European Standard EN 12209:03:**
Grade 6 Security – 1,000 kg for lateral thrust and 600 kg for front load.
- **Long faceplate version according to the European Standard prEN 15685:10:**
Grade 6 Security – 1,000 kg for lateral thrust and 600 kg for front load.
Grade 7 Security – like Grade 6 with the use of protective plates 06436 Series.



CISA S.p.A.
Via Oberdan, 42
48018 Faenza (RA) Italy
Tel. +39 0546 677111
Fax +39 0546 677150
cisa.vendite@irco.com
cisa.com
cisamultitop.com



@CISALocks

YouTube





MULTI^{III}**TCP**
PRO

Gear locks for aluminium doors



cisamultitop.com



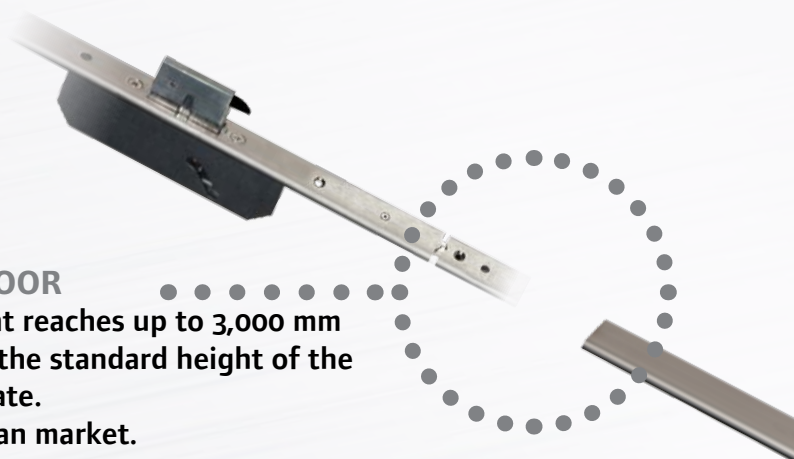
COVERS THE ENTIRE DOOR

An extension that reaches up to 3,000 mm can be added to the standard height of the 2,300 mm faceplate.

New for the Italian market.

Benefits:

- Improves aesthetics
- Increases security and to hermetically seal the door

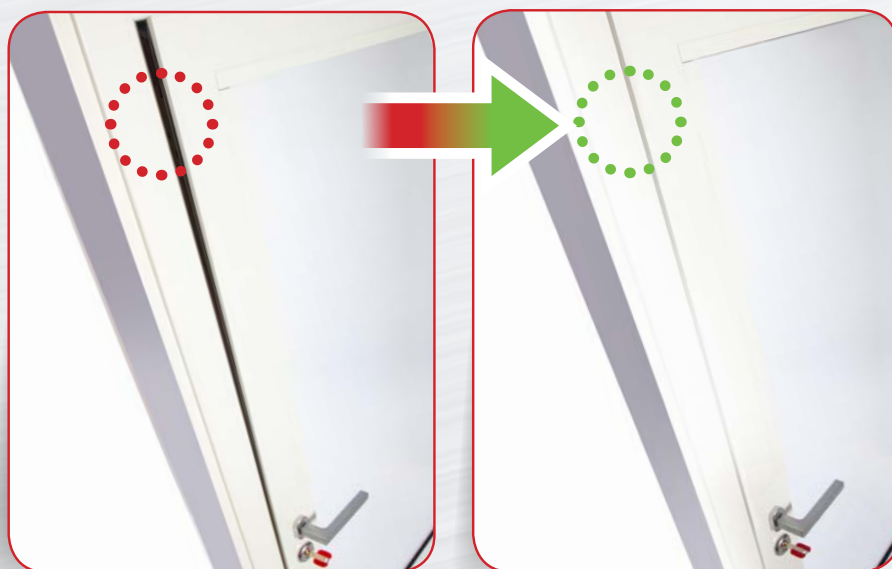


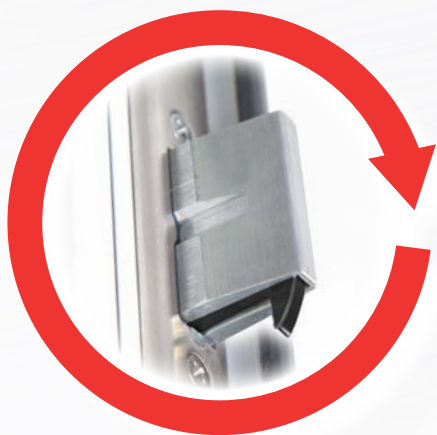
CORRECTS HEAT DISTORTION

The "effort reducing" gear mechanism that makes it easier to turn the key, and the 12 mm thick deadbolt with its more rounded design, offer an effective solution to close and secure doors subject to heat distortion.

Benefits:

- Hermetic seal increasing the energy savings
- Cuts maintenance times and costs for the installer





HIGH SECURITY

- New locking system with hook in hardened steel (CISA patent registered)
- Horizontal sliding deadbolt with increased thickness (12 mm)
- Deadbolts independent of the central mechanism
- Deadbolts protected with a hardened steel plate

Benefit:

- Greater resistance to forced entry

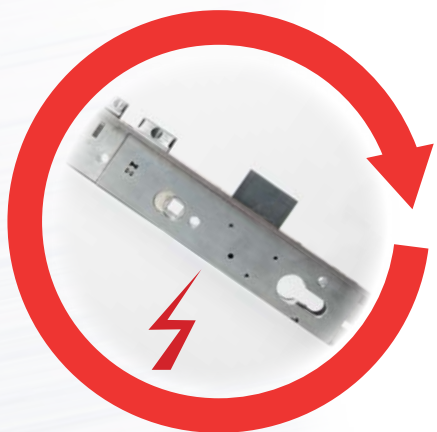


CASE THICKNESS

The cases are 15.5 mm thick.

Benefit:

- Fewer holes are needed on the profile and the lock is correctly installed on thermal cut and European groove profiles



ELECTRIC VERSION

Multitop Pro series offers a complete range of electric locks with a 15.5 mm thick case (as with the mechanical version) and with a dead-locking device on the latchbolt.

Benefits:

- Fewer holes are needed on the profile and the lock is correctly installed on thermal cut and European groove profiles
- Increases security for doors which are locked with the latchbolt only



INTERCHANGEABILITY

- Completely interchangeable with previously installed versions
- Backsets from 25 to 40 mm
- Highly compact thanks to the distance from the cylinder (15 mm)
- Interasse 85 e 92 mm

Benefits:

- No additional work needed on the door
- Cylinder always correctly positioned
- No holes needed on the back part of the profile during installation

MULTITCP PRO

INTERCHANGEABLE LATCHBOLT

The CISA Multitop Pro range is available in the latchbolt version.

The following operations are possible:

- Change from latchbolt to roller directly from the lock faceplate (CISA patent registered)
- Insert the latchbolt backwards for the deadbolt only version

Benefits:

- Reduced stock
- More flexible adjustments
- The roller can be replaced even when the lock is installed
- No need for additional accessories for the deadbolt only function



CLOSED CASE

The lock and divertors cases are enclosed, including the hooks on the rods.

Benefits:

- Dirt and dust cannot get in
- Eliminates the possibility of damage during installation



TOTAL PROTECTION

The lock can be fitted with 4th and 5th locking points.

Benefit:

- Greater security for two-leaf doors

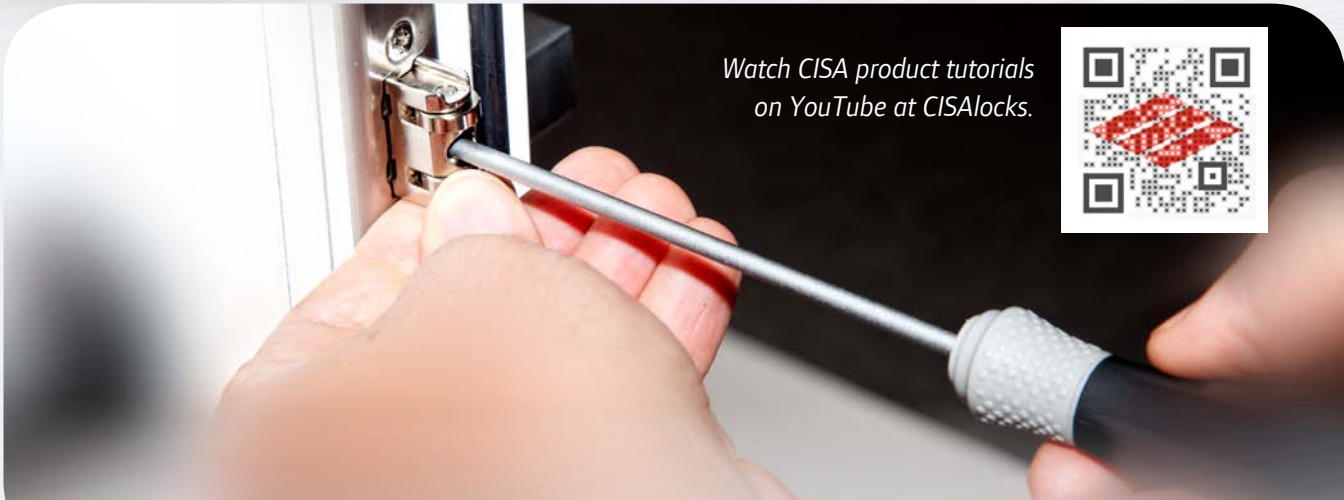
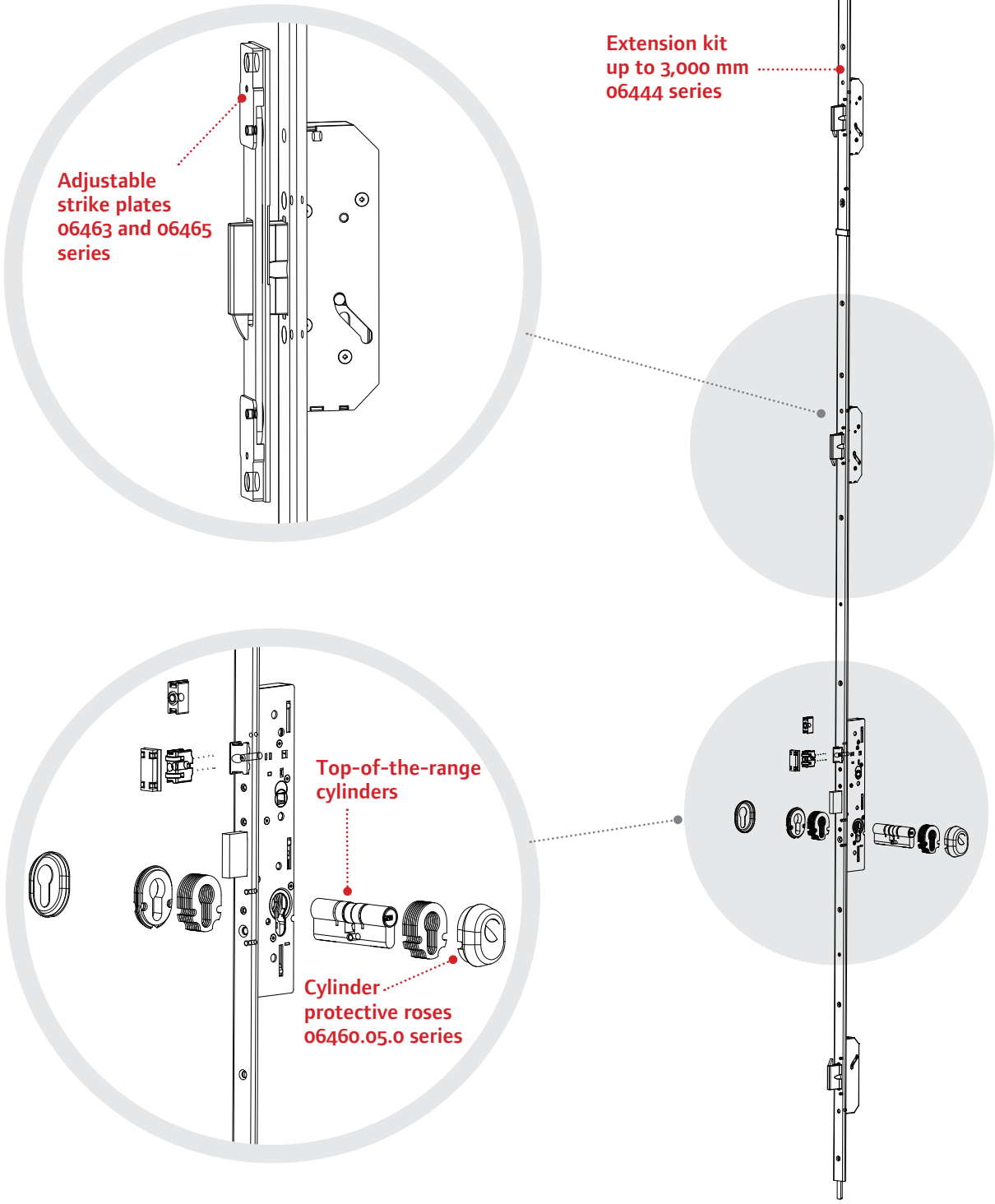


FINISHES AVAILABLE

- Faceplate in stainless steel
- Faceplate in black painted stainless steel

APPLICABLE ACCESSORIES

For top performance, security and guaranteed smooth operation complete Multitop Pro with the following CISA accessories.



Watch CISA product tutorials
on YouTube at [CISALocks](https://www.youtube.com/CISALocks).

