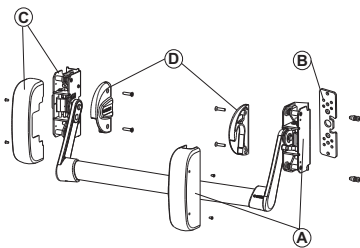


AP001 TOP-BOTTOM



Functions
PUSH-BAR type of panic exit device for surface mounting.

Online data sheet

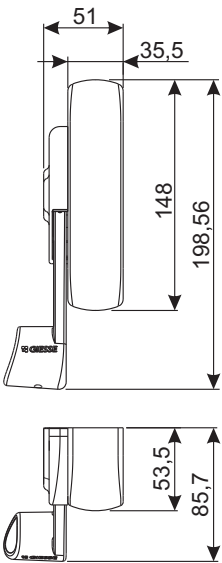


Technical Features
The top-bottom version AP001 system consists of:

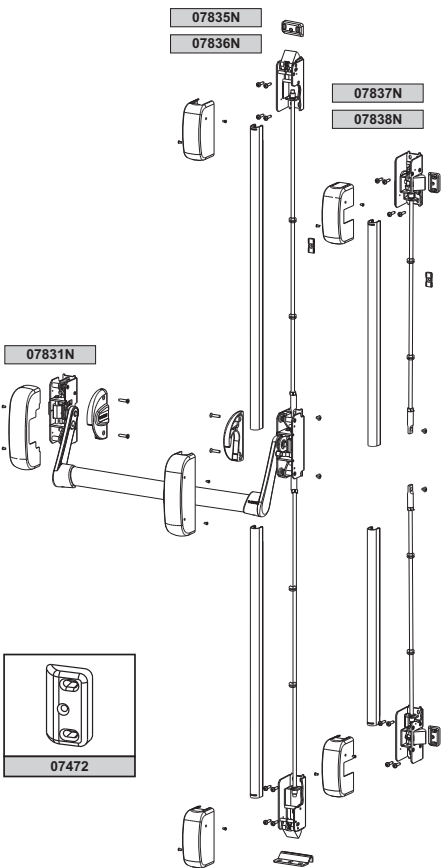
- The main reversible mechanism (A) without a lateral spring latch that can be combined with additional locking mechanisms and the mechanism protection plug
- the shimming plate (B) for the main mechanism
- the secondary reversible mechanism (C) and its mechanism protection plug
- the left and right bracket stop blocks (D)

The top-bottom AP001 system is to be combined with the additional locking mechanisms.
AP001 is ideal for use on fire doors when paired with additional locking mechanisms that are specific for this use

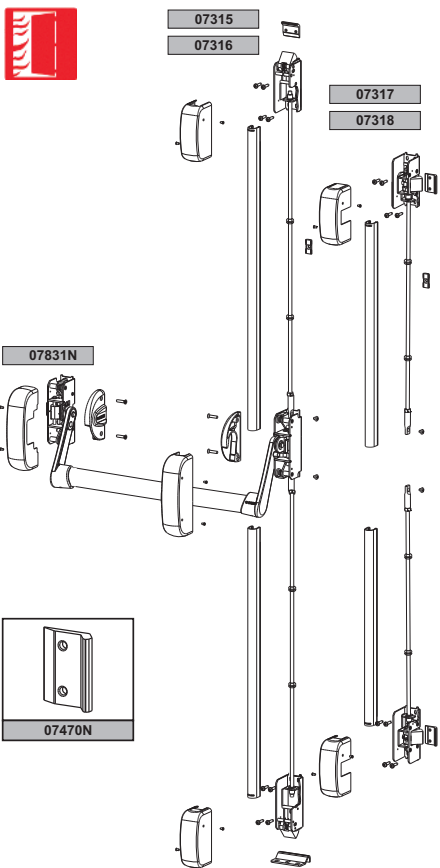
Materials
Mechanisms in zinc plated steel
Painted steel mechanism protection plug
Brackets and bracket stop blocks in zamak
Shimming plate in zinc plated steel
Grub screws and fixing screws in zinc plated steel



Standard version



Fire version



Item code	Description	Note	Base Raw	Anodised Elox	Painted	Trend/Gold Brass	Pieces per pack
07831N	PANIC EXIT DEVICE AP001 F TOP/ BOTTOM				X		1